

MASONRY Laboratory Website

Lab 6 – Non-Destructive Evaluation

Lab

[Observation](#)

[Radar](#)

[Infrared Imaging](#)

[Cover Meter](#)

[Flatjack Testing](#)

[Impact Echo](#)

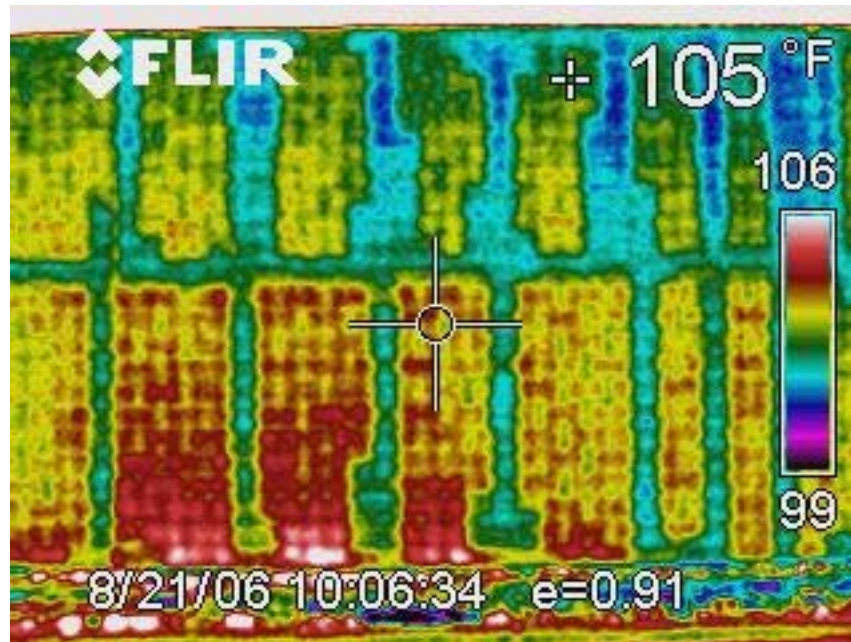
Extras

[Photos](#)

[Lab Equipment and Materials](#)

[Extra Resources](#)

[Lab Worksheet](#)



General information:

Infrared imaging gives insight into the inner conditions of a material. Infrared imaging is used in non-destructive testing by measuring differences in heat capacity. Infrared imaging requires a heat differential between the two sides of the masonry in order to show the different heat transfer properties between grouted and ungrouted cells within a CMU wall. Infrared imaging can be done passively by capturing the images shortly after they absorb solar radiation in the morning or shortly after they are shaded in the evening. This heat differential can also be mimicked by either cooling or heating one side of the wall..